

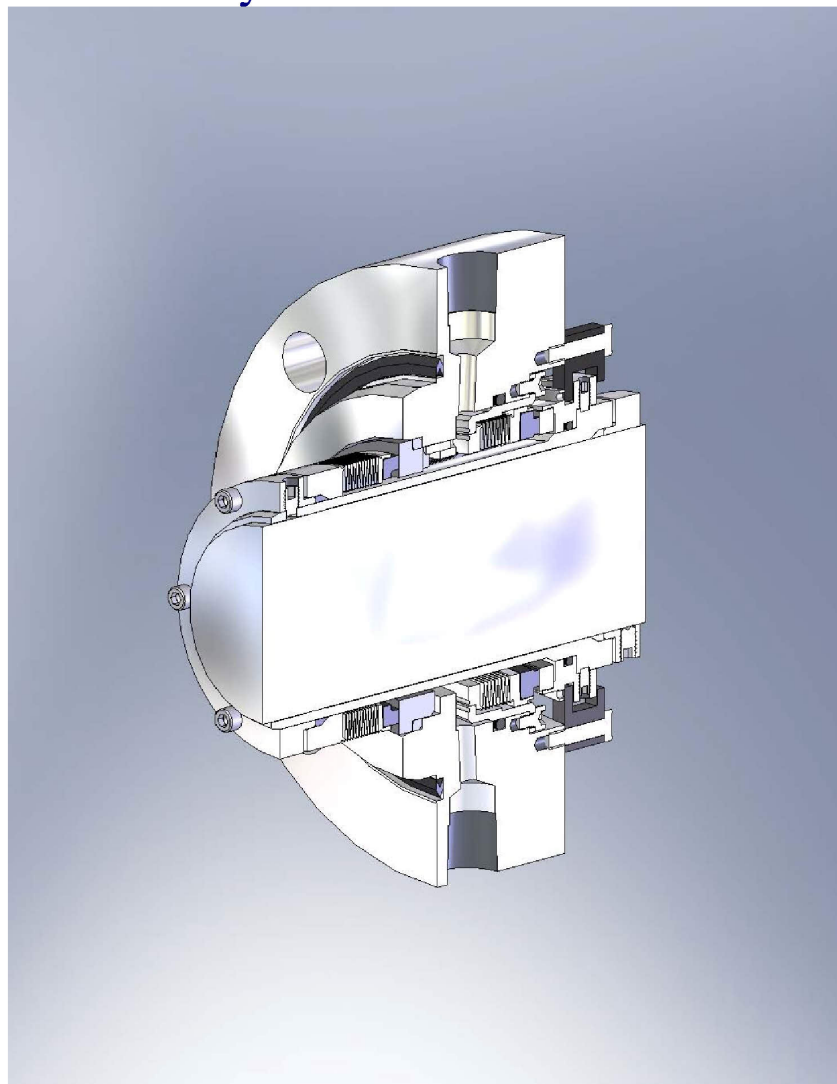


API RANGE OF SEALS





Flex-A-Seal, Inc. has been providing sealing solutions for the Oil & Gas Industry for over TWO DECADES!



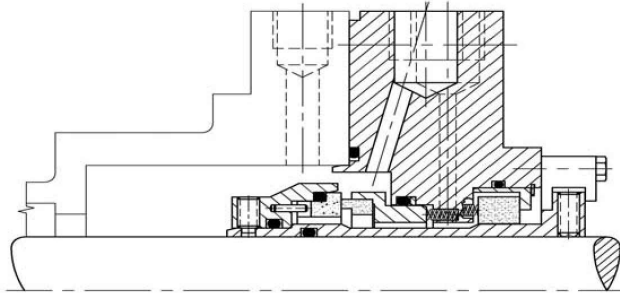
FAS TYPE FC MECHANICAL SEAL

Arrangement 2 Dual – 2CW-CS

Contacting wet inner seal with contacting containment seal



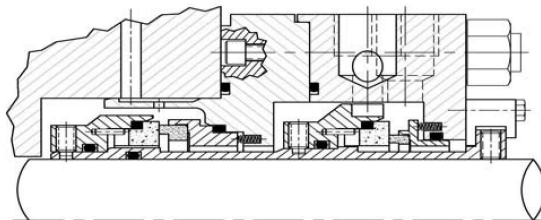
TYPE A Category 1& 2 Contacting Wet Seals



FAS Type 58A – Arrangement 1 – Single – 1CW-FL

Description : Single Cartridge Stationary Flexible Element Seal, robust and reliable seal face drive, floating bushing, Flush, Quench & Drain connections

Materials Available : Antimony Impregnated Carbon, Ni Tungsten Carbide and Silicon Carbide face materials, 316SS or higher metallurgy, Hastelloy “C” springs, Aflas, Viton® and perfluoroelastomers available



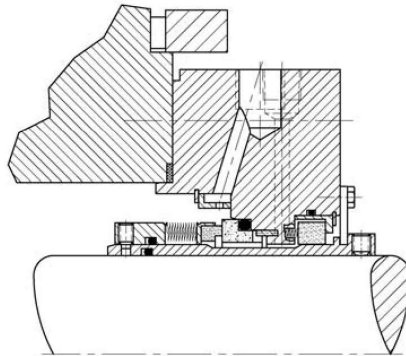
FAS Type 79A – Arrangement 2 – Dual – 2CW-CW

Description : Double Cartridge Stationary Flexible Element Seal with pumping ring, heavy duty construction, tangential connection maximizes flow of barrier fluid, double balanced inboard face, springs out of product

Materials : Antimony Impregnated Carbon, Ni Tungsten Carbide and Silicon Carbide face materials, 316SS or higher metallurgy, Hastelloy “C” springs, Aflas, Viton® and perfluoroelastomers available



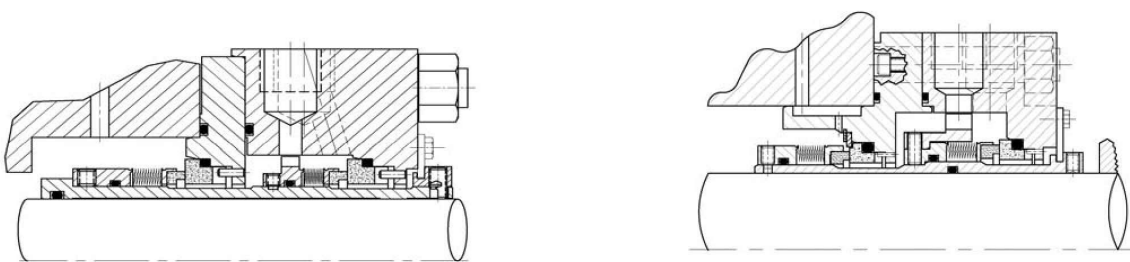
TYPE B CATEGORY 1&2 CONTACTING WET SEALS



FAS Type 53A – Arrangement 1 – 1CW-FL

Description: Single cartridge rotating welded metal bellows design. self cleaning, hydraulically balanced, floating bushing, multi-port injection, Flush, Quench & Drain

Materials: Antimony Impregnated Carbon, Ni Tungsten Carbide and Silicon Carbide face materials, Hast C bellows, 316SS or higher metallurgy, Aflas, Viton® and perfluoroelastomers available



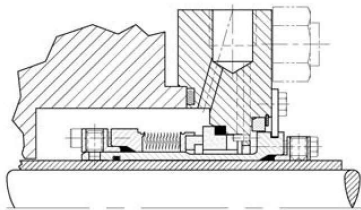
FAS Type 78A – Arrangement 2/3 – 2CW-CW

Description: Tandem rotating welded metal bellows cartridge seal with pumping ring, tangential outlet connection, and static orings throughout

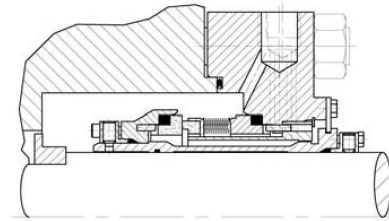
Materials: Antimony Impregnated Carbon, Ni Tungsten Carbide and Silicon Carbide face materials, Hast C Bellows, 316SS or higher metallurgy, Aflas, Viton® and perfluoroelastomers available



TYPE C CATEGORY 1 & 2 CONTACTING WET SEALS



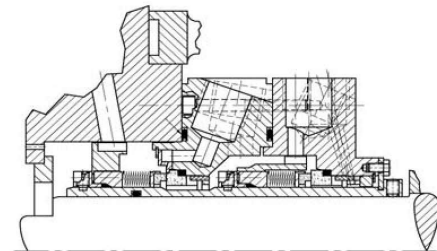
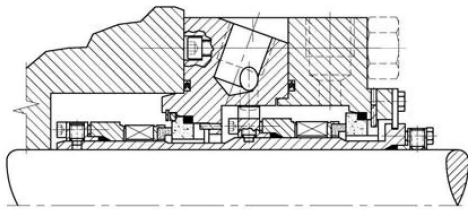
Type 66A – Arrangement 1 – 1CW-FX



Type 63A – Arrangement 1 – 1CW-FX

Description : Single Cartridge Rotating or Stationary high temperature welded metal bellows design, no dynamic elastomers, even 360 face loading, confined gasket, Flush, Quench & Drain, steam deflector available

Materials : Antimony Impregnated Carbon, Ni Tungsten Carbide and Silicon Carbide face materials, 316SS or higher metallurgy, Carp 42/AM350 HT or Carp 42/Inconel 718 HT bellows, grafoil and spiral wound gasket

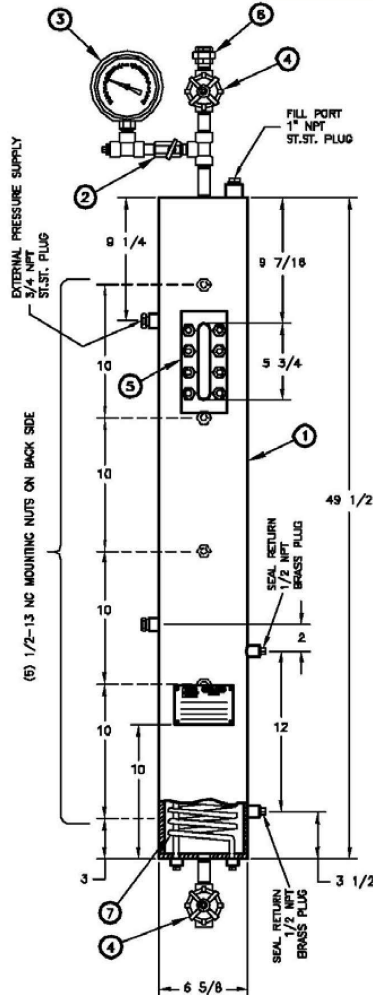


High Temp Type 78X – Arrangement 2/3 – 2CW-CW

Description: Tandem rotating welded metal bellows cartridge seal with pumping ring, tangential outlet connection; secondary sealing elements are flexible graphite, retained faces, hydraulically balanced

Materials: Antimony Impregnated Carbon, Ni Tungsten Carbide and Silicon Carbide face materials, Carp 42/AM350 HT or Carp 42/ Inconel 718 HT bellows, 316SS or higher metallurgy, grafoil and spiral wound gasket

SEAL SUPPORT SYSTEMS



API 610 7th Edition Plan 52

- | | |
|-------------------|----------------------|
| 1.) Tank | 2.) Instrument Valve |
| 3.) Pressure Gage | 4.) Gate Valves |
| 5.) Level Gage | 6.) Orifice Union |
| 7.) Cooling Coils | |

Other Available Sealing Support Equipment Available

- Flowmeters
- Heat Exchangers
- Cyclone Separators
- Barrier Fluid Stands



Manufacturing & Stocking Centers

USA

1 Jackson Street
PO Box 184
Essex Jct., VT 05453 – 0184 USA
Phone: (800) 426-3594, (802) 878-8307
Fax : (802) 878-2479
Email : sales@flexaseal.com
www.flexaseal.com

BRAZIL

Rua Visconde De Taunay
59 Loja 06-CEP
Bom Retiro, Sao Paulo
Brazil CEP 01132-000
Phone : 55-11-3115-4819
Fax : 55-11-3101-1297
Email : vendas@flexaseal.com.br

