

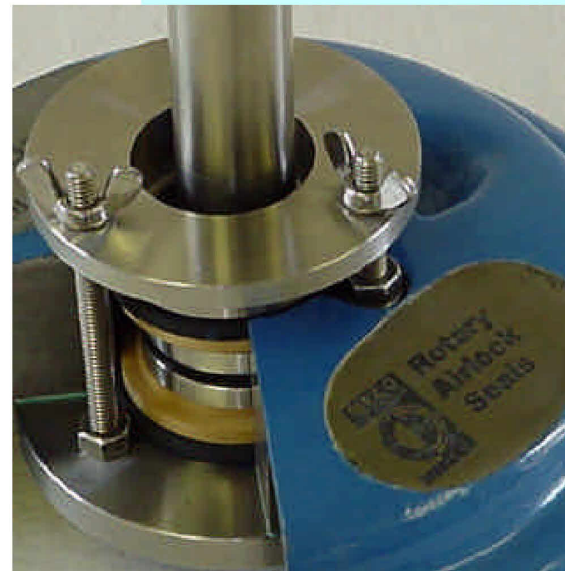
MECOPAC

STUFFING BOX INSERT SEALS



The MECOPAC is an elastomer-driven, MECO seal designed to replace packing in stuffing boxes. It is used primarily in airlocks and rotary valves, where no installation clearance exists for an externally-mounted seal.

Like other MECO seals, the MECOPAC seals on a plane perpendicular to the shaft, eliminating abrasive damage to the shaft caused by packing or lip seals. The MECOPAC has proven effective in maintaining pressure differential across airlocks, without the frequent adjustments required by packings.



MECO-PAC in cutaway stuffing box

The MECOPAC is available in several materials, for service in a wide variety of products, including food and pharmaceutical products, abrasives, hazardous and toxic materials. The MECOPAC's function is identical to that of the MECO EAS seal.



While the MECOPAC can be built fully-split, most installations do not offer sufficient radial clearance for split parts, and the seal is usually manufactured unsplit.

The MECOPAC requires a minimum 5/16" packing section, a minimum bore depth of 1.25", and an air or gas purge of approximately 1/2 CFM at 3-5 psig.



MECO CUSTOM ENGINEERED SHAFT SEALS

