

MECO AH & AP

SERIES SEALS



The MECO AH-series seals represent the latest refinement of MECO's classic elastomer-driven seal design. While using the same, patented principle of the MECO EAS, the AH series is designed to eliminate the process of setting seal face pressures. For the user who must frequently sanitize seals, this means simple, trouble-free installation after cleaning.

AH series seals are for use in low to moderate abrasive powder processes, on ribbon blenders and paddle mixers, reactors, screw conveyors, bucket elevators and similar blending or conveying machinery. AH and AP-series seals are also used as replacements for lip seals to isolate lube oil in bearings. These designs can be used in many cases where installation clearances are too tight to permit the use of other MECO seal types.



Above: Unsplit AHU seals

Left: Split AHS series seal



MECO AH & AP SERIES SEALS

The AH seal uses heavy, 1/2" stainless plate stators, to ensure flatness and long life, despite extensive handling. The split AHS seal's parts can be easily assembled on the shaft and simply bolted into position. Proper seal face pressure is established just by snugging the assembly bolts. There is no calibration process, and correct face pressures are reliably applied, time and again.

Despite the AH's "set and forget" design, the seal incorporates both a basic adjustment mechanism and monitoring provisions to allow operators to perform preventive maintenance before product leakage occurs.

AHU unsplit and AHS split seals are particularly well-suited to food and pharmaceutical applications. They are ideal for mixers processing dry beverage, spice and flavoring mixes, where frequent product changes and washdowns are required. The seals are fitted with flush water inlet and drain ports, as well as compressed air purge connection ports.

The AH series' "little brothers", the AP series seals, provide the same predictable performance and ease of adjustment as the AH series, but in a smaller package, for installation in even tighter environments. Both have been built into existing lip seal housings and can be highly customized to fit your machinery.

- Simple installation
- Easy cleaning and sanitizing
- Flush ports for in-place cleanouts
- Available split
- Standard 1/4" TIR runout

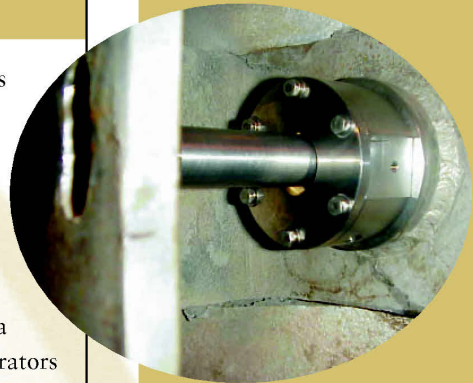
MECO custom shaft seals, manufactured by:



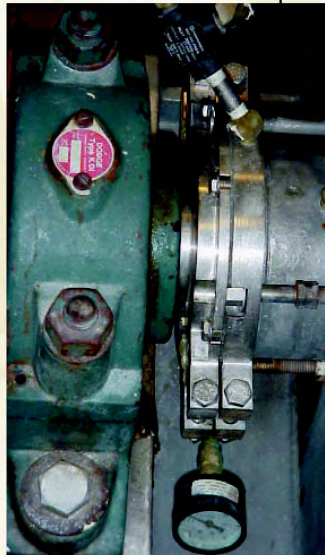
WOODEX BEARING COMPANY, INC.



bekaert seals
PUMPING & MIXING



Above: AHU series seal on rotating valve actuator shaft.



Left and Below: AHS series split seal, on ribbon blender processing spices.

