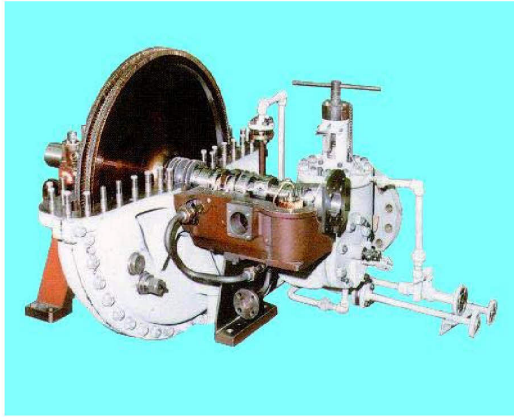




DURABLE BY DESIGN

# MAGNUM - S

## STEAM TURBINE BEARING SEAL

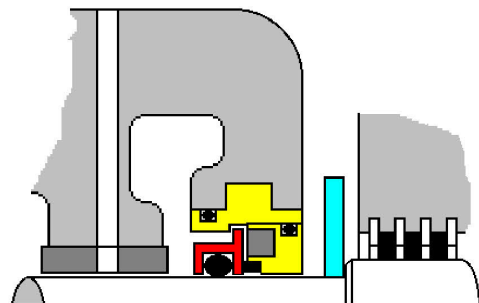


The new **ISOMAG MAGNUM-S** finally resolves the long-standing issues of oil leakage and water contamination that have plagued steam turbine bearing seals.

The **MAGNUM-S** cartridge seal will fit into most industrial steam turbines. The narrow cross section and short axial length fits into applications that were previously prevented from using precision flat face seals.

Unitized cartridge design correctly sets the seal forever. Axial rotor movement is contained within the cobalt magnetic field for the life of the seal ... Even if you move the shaft.

**MAGNUM-S** is a precision contact mechanical seal designed to completely seal your steam turbine power frame. The "S" features precision lapped faces and O.D. hydraulic loading to assure sealing in flooded applications. All these features are in a compact unitized assembly that installs in the same location as the OEM labyrinth seal.



**MAGNUM-S**

U.S. PATENTS  
5,730,447 6,805,358



**bekaert seals**

PUMPING & MIXING

OIL FLOODED  
OIL MIST  
OIL SPLASH

CUSTOM  
BUILT TO FIT  
YOUR TURBINE

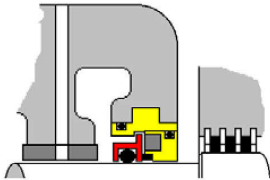
HORIZONTAL  
VERTICAL UP  
VERTICAL DOWN



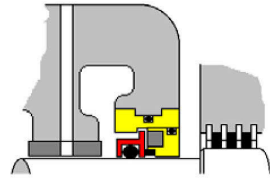
DURABLE BY DESIGN

# MAGNUM - S

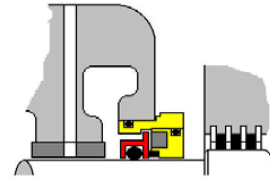
STEAM TURBINE BEARING SEAL



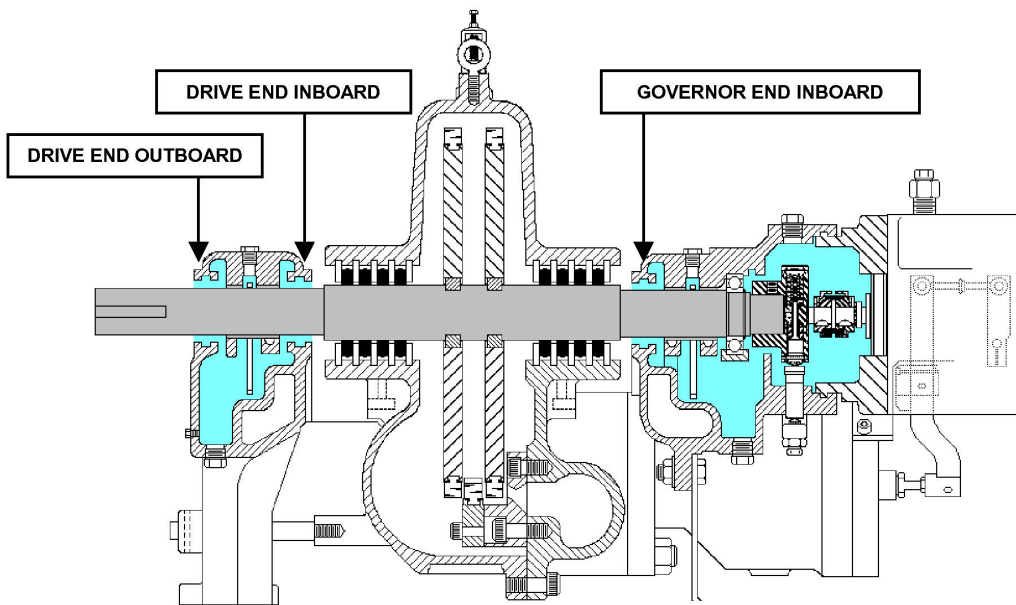
MALE TURBINE SEAL



FEMALE TURBINE SEAL



FLANGED TURBINE SEAL



Application data sheets available at <http://www.isomag.com>

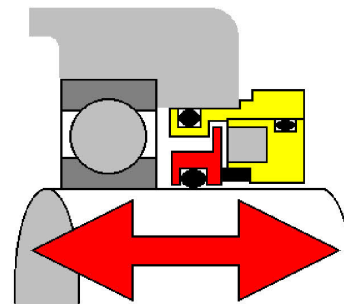
### SPECIFICATIONS

ROTARY FACE	: HT 17-4 PH
STATIONARY FACE	: TFE COMPOSITE
STATOR	: BRONZE std.
ADAPTER	: BRONZE std.
ELASTOMERS	: VITON std.
MAGNETS	: RARE EARTH

*Optional materials available*

#### MAX OPERATING CONDITIONS

OPERATING TEMP	: 300 F
PRESSURE	: 20 PSIG
SPEED Lubricated	: 12,000 FPM
SPEED Dry	: 4,000 FPM



HANDLES AXIAL SHAFT MOVEMENT



**bekaert seals**

PUMPING & MIXING