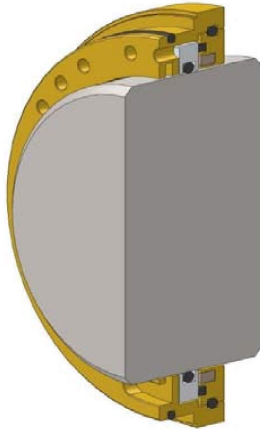




MAG-P V-7

MAGNETIC ENERGY
CARTRIDGE BEARING SEAL



Lapped flat face bearing seals eliminate lubricant loss and protect bearings from contaminants.

The **MAG-P V-7** seal is the result of our dedicated mission to increase seal life.

Wear life is maximized using **reduced heat generation combined with our close clearance internal labyrinth for the first time.**

This technological breakthrough makes the **MAG-P V-7** the **most versatile** flat face bearing seal available. It can be used in thousands of applications from 3/4" to 13" shaft sizes.

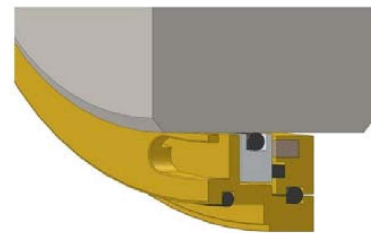
All **ISOMAG** cartridge seals feature our patented controlled range magnetic sealing faces that correctly set the seal. Our compact designs fit more sizes and types of equipment than any other flat face bearing seal.

ISOMAG bearing seals are designed to increase your MTBF and they are guaranteed not to damage your shaft. Significant savings can be realized with **longer run times** and eliminating repairing or replacing shafts damaged by lip seals.

The **MAG-P V-7** creates a **positive, bi-directional seal with or without shaft rotation.**

MAG-P V-7 seals use nickel plated rare earth magnets that are rated to 400 degrees F and isolated away from the lubricant.

All **ISOMAG** cartridge seals have **EASY FLEX** magnetic **self aligning faces**. The increased flexibility handles more misalignment and more applications.



MAG-P V-7

U.S. Patents
5,730,447
6,805,358

OIL FLOODED
OIL MIST
OIL SPLASH
GREASE

ANSI
API 610

HORIZONTAL
OR
VERTICAL



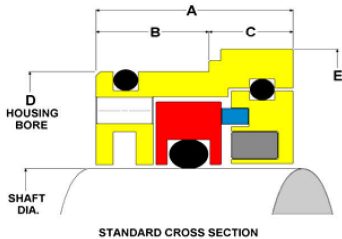
bekaert seals
PUMPING & MIXING



DURABLE BY DESIGN

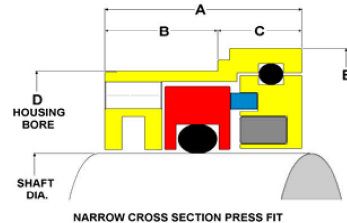
MAG-P V-7

MAGNETIC ENERGY
CARTRIDGE BEARING SEAL



STANDARD CROSS SECTION

**AVAILABLE
TO FIT ANY
SHAFT SIZE
3/4" to 13"**



NARROW CROSS SECTION PRESS FIT

EXTERNAL DIMENSIONS

SHAFT DIA.	A	B	C	D MIN. BORE DIA.	E TYPICAL
.745" to 3.005"	.750	.375	.375	SHAFT DIA. +0.750	D+0.250
3.006" to 4.005"	.950	.500	.450	SHAFT DIA. +0.750	D+0.250
4.006" to 7.005"	1.050	.500	.550	SHAFT DIA. +1.000	D+0.250
7.006" to 13.000"	1.250	.625	.625	SHAFT DIA. +1.250	D+0.500

MATERIAL SPECIFICATIONS

Rotary face:	Heat treated 17-4ph
Stationary face:	TFE composite
Primary metal parts:	660 bronze std. 304ss available
Elastomers:	Viton std.
Magnets:	Rare earth, rated to 400° F

PERFORMANCE RATINGS

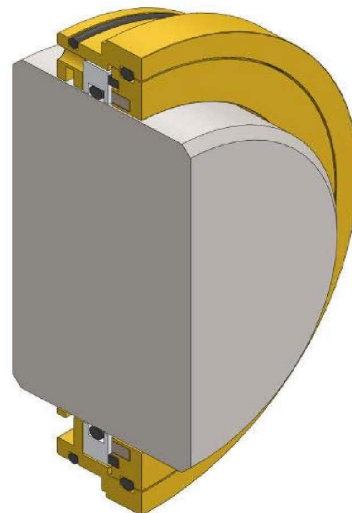
Engineered designs for specialty applications available on request.

Contact Isomag factory for applications above 5,000 ft./minute or above 200° F

SEAL SELECTION CHART

APPLICATION	MAG-D	MP V-6	MP V-7
HIGH SPEED	3	2	1
HIGH VISCOSITY	2	1	2
OIL FLOODED	2	1	1
OIL SPLASH	1	1	1
OIL MIST	1	2	1
GREASE	1	1	1
HORIZONTAL	1	1	1
VERTICAL UP	1	3	3
VERTICAL DOWN	3	1	1
DUSTY ENVIRONMENT	1	2	2
HEAVY WASH DOWN	1	2	3

1 - Best 2 - Better 3 - Good



bekaert seals
PUMPING & MIXING

